

## PAGL 111 Narrative Summary

The **89<sup>th</sup> Glenolden, PA Christmas Bird Count** (part of the 111<sup>th</sup> Audubon CBC) was held Saturday, December 18, 2010. Census area is a 15 mile diameter circle centered at the intersection of Beatty Rd & Twyckenham Ave in the Bowling Green section of Media. Last year we moved the center slightly north and west of the traditional center to eliminate some overlap with the West Chester CBC and to better include some areas that had been on the edge of the circle and had been traditionally counted anyway. GPS coordinates for the current center are 39.917836, -75.374962

The Glenolden count is traditionally held on the third Saturday in December. Last year it was held on the first Saturday in January due to heavy snow on the originally scheduled day so please note both counts were held in the year 2010. This was the first time in anyone's memory that the Glenolden CBC was postponed for any reason.

The count circle includes the John Heinz NWR at Tinicum, the Delaware River from Fort Mifflin south to Marcus Hook, Ridley Creek State Park, Tyler Arboretum, Springton Reservoir, Crum Reservoir, Earle's Lake, Waterloo Mills-DelCo portion, and the Chester, Cobb's, Crum, Darby, and Ridley Creek watersheds.

This year I have attached a count summary printed from the CBC website. In it you will see the details of the weather and effort. The weather was favorable this year and our effort, measured in party-hours was about average.

There is also a species list that includes the number of individuals seen this year along with the historical high count for each species and in which count the high was achieved. Also there is a frequency number labeled "Number of Counts". This number represents the number of years the species was recorded in the last 53 CBCs prior to this year. The starting point is therefore PAGL58 which in Delaware County was held in December of 1957. This date was chosen by Audubon as a point from which the participation and data reporting reached a steady consistency. The historical high date from that 1957-58 count. There may be highs prior to that which can be found with more diligent search of the data base if desired.

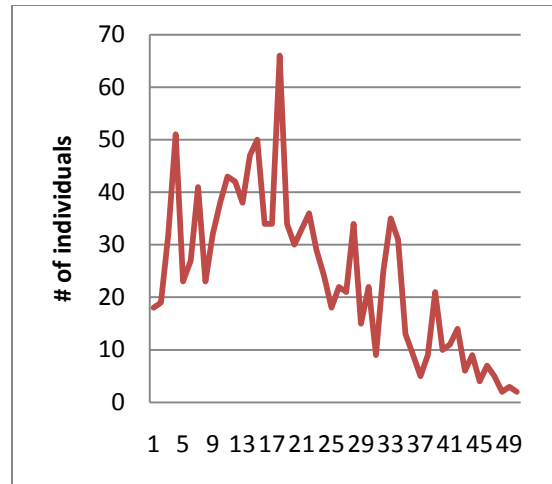
Historical data on the Glenolden CBC and all other circles can be found on the CBC website <http://www.christmasbirdcount.org>. Count Code for our area is PAGL. The first national CBC (#1) was held Dec 25, 1900. Therefore CBC # 58 was 1957-58. Last year's PAGL110 was held January 2010; this year's count # 111 was in Dec 2010. Get it? This was the 89<sup>th</sup> Glenolden CBC.

We did have one High Count this year, 3 **Pine Warblers**. Two were found by Charles Smith & Bob Kelly near, but not in, Tyler Arboretum and the 3<sup>rd</sup> was found behind Riddle Hospital by Jim Molyneaux and company. Pine warbler was first found on PAGL75 (1974) and not again until 1983. It has been found on 12 CBCs since then. Usually there is only one individual per count; 2 have been found on 3 previous CBCs. No new species were found this year. The Cumulative List Total Species remains at 189.

Low numbers continued for **Ruddy Duck** (average number until 1986 was 5,256; since 1986 average count only 31). Also **American Kestrel** continued its steady decline (average until 1989-32.5; 1990-2001-16; since 2002-4.5, see graph).

**American Kestrel** (PAGL previous 53 years):

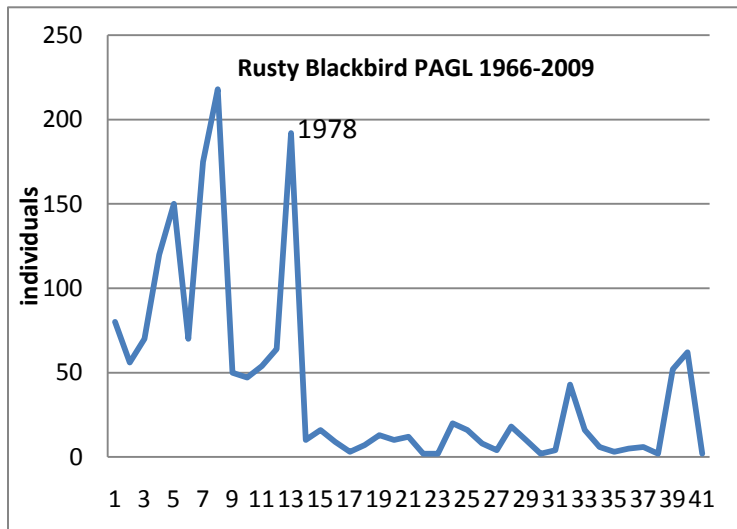
This species is reported to be holding its own state-wide except in southeast PA. Habitat loss is the most widely blamed cause.



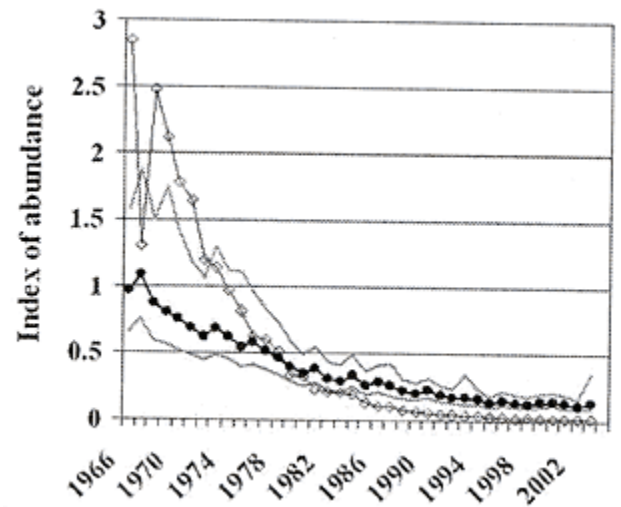
Good numbers continued for historically southern species like **Black Vulture**. Over 100 individuals were counted coming into a roost in Chester Heights this year. The **Red-bellied Woodpecker** story is old but I ran averages out of curiosity. The average count prior to 1969 was 5; 1969 and onward was 81. **Eastern Bluebird** counts are encouraging, I'm sure in no small part due to the efforts of our local bluebird stewards. The average count for bluebirds prior to 1977 was 12; 1977-1999-67; 2000-2010-98.

The **Rusty Blackbird** decline is a national phenomenon. The graph shows a precipitous decline in this species on the CBC since 1978. Our CBC data mirrors the national trend. More information about the decline of the Rusty Blackbird can be found at

[http://nationalzoo.si.edu/scbi/migratorybirds/research/rusty\\_blackbird/decline.cfm](http://nationalzoo.si.edu/scbi/migratorybirds/research/rusty_blackbird/decline.cfm)



Glenolden CBC data in # individuals since 1966



National CBC & BBS data

This year's species count of 90 (93 including count week) is below the average of 100 species. What did we miss? One missing species was **Nick Pulcinella**. Family commitments caused him to miss his first CBC since 1969. He'll be back next year. In terms of birds rather than birders **American Coot**, not found this year and last, has been missing in only 4 of the prior 52 years. **Black-crowned Night-heron** was found in 39 of 44 CBCs prior to 2002. There have been none since 2001. Interestingly, despite its well known decline in numbers **Ring-necked Pheasant**, missed this year, has only been missed one other time in the past 54 years, 2006. Although found only in low numbers this will only be the 3<sup>rd</sup> miss for **Ruby-crowned Kinglet** in 54 years. The other misses were in 1963 and 1966. Some species that were not found this year but are present on at least 75% of recent counts are **Snow Goose, Wood Duck, American Wigeon, Common Goldeneye, Gadwall, Pied-billed Grebe, Wilson's Snipe and Horned Lark**.

**Observers and number of years of participation** (when available & subject to correction) Area Captains are in **bold**: Ellis Akers (39), Barbara Arendt, Gary Becker (7), Debbie Beer, Jim Bodine (20), Sarah Boucas-Neto (4), Isadora Boucas-Neto, Denis Brennan, Richard Brenner (3), Judith Burns, Donna Chadderton (2), Jenny Cole (2), **Skip Conant** (27), Alan Crawford III, Alvera Crocetto (36), Nick Crocetto (36), Dan Crocker, Cynthia Curry (9), **John D'Amico** (13), Susan D'Amico (12), Godefroy Devevy, Don DiPietro (1), **David Eberly** (20; compiler), Phyllis Fingerhood (16), Jan Foot, **Kevin Fryberger** (3), **Al Guarente** (38), **John Hand** (1), Cliff Hence, Barbara Hohenstein (11), **Rich Horwitz** (22), **Lois Hunn** (13), Hiroshi Iizuka, **Sheryl Johnson** (15), **Stephen Kapski** (16), Bob Kelly (2), Amy Langman (1), **Chris Langman** (2), Chelsea Lucas, Sue Lucas (4), Ian McDougal (9), **Doris McGovern** (27), **Tom McParland** (16), Kathy Meermans (4), Rob Megraw (18), Dolly Mignogna (4), **Jim Molyneaux** (2), Carol Molyneaux (2), Mike Morell (1), Alison Mostrom (19), Trang Nguyen, Anne Padget, **Carl Perretta** (21), Jasun Porter, **Chris Pugliese** (2), Jim Purtill (1), Brian Quinlin (4), Brian Racich, Jack Rafferty (3), **Marie Rafferty** (3), **Tom Reeves** (37), Bill Roache III (10), Lynn Roman, Robert Scott (1), Alice Severeid (5), **Edwin Shafer** (6), **Charles Smith** (3), Cindy Steven (1), Gary Stolz (4), Carol Storey (5), Gloria Todor, Pat Trevelino (6), Kris Wade (1), Peter Wade (1), Scott Tuttle (4), **Chris Walters** (33), George Wrangham (3), Bruce Wyman.

Many thanks to you all!!

Next year's Christmas Bird Count will be held **Saturday December 17, 2011**. See you then.

David Eberly

[david.eberly@gmail.com](mailto:david.eberly@gmail.com)

610 543 3499

## COUNT SUMMARY

<b>Count Name:</b> Delaware County (Glenolden) <b>Count Date:</b> Dec 18, 2010 <b>Compiler:</b> David Eberly	<b>Count Code:</b> PAGL <b>Number of Party Hours:</b> 163.75 <b>Species reported on count date:</b> 90
--	--

Start and End Times	Start Time	End Time
1	04:30 AM	05:00 PM

Effort		
	<b>Observers</b>	
<b><u>In Field:</u></b>	<b>Total Number:</b> 78	
	<b>Minimum Number of Parties (daylight):</b> 28	
	<b>Maximum Number of Parties (daylight):</b> 33	
<b><u>At Feeders:</u></b>	<b>Total Number:</b> 9	
Party Hours and Distance (excludes viewing at feeders and nocturnal birding)		
	All distances are in <b>miles</b> .	
<b><u>By Foot :</u></b>	<b>Hours:</b> 127.25	<b>Distance:</b> 101.50 mi
<b><u>By Car :</u></b>	<b>Hours:</b> 36.5	<b>Distance:</b> 359.25 mi
Other Time and Distance		
<b>At Feeders:</b>	<b>Hours:</b> 35.5	
<b>Nocturnal Birding:</b>	<b>Hours:</b> 13.5	<b>Distance:</b> 38.75 mi
	<b>Totals</b>	
<b><u>Total Party :</u></b>	<b>Hours:</b> 163.75 (avg 151)	<b>Distance:</b> 460.75 mi

Weather		
<b>Temperature</b>	<b>Minimum:</b> 21 F°	<b>Maximum:</b> 36 F°
<b>Wind Direction</b>	West	
<b>Wind Velocity</b>	<b>Minimum:</b> 5.0	<b>Maximum:</b> 14.0
<b>Snow Depth</b>	<b>Minimum:</b> 0.0	<b>Maximum:</b> 0.0

<b>Still Water</b>	Partly Open	
<b>Moving Water</b>	Partly Frozen	
<b>AM and PM Conditions</b>		
<b>Cloud Cover</b>	<b>AM: Partly Cloudy</b>	<b>PM: Cloudy</b>
<b>AM Rain</b>	None	
<b>AM Snow</b>	None	
<b>PM Rain</b>	None	
<b>PM Snow</b>	None	

**Special Aspects for Count Circle**

<b>Checklist</b>				
<b>Species</b>	<b>Number or cw</b>	<b>Flags</b>	<b>Max Number</b>	<b>Number of counts (since #58)</b>
<b>Canada Goose</b>	13792		15880 in 109	50
<b>Tundra Swan</b>	31		130 in 75	37
<b>Wood Duck</b>	2		13 in 102	35
<b>American Black Duck</b>	137		4700 in 63	51
<b>Mallard</b>	588		2245 in 76	53
<b>Northern Shoveler</b>	8		312 in 108	45
<b>Northern Pintail</b>	4		13000 in 63	50
<b>Green-winged Teal</b>	15		3000 in 68	52
<b>Ring-necked Duck</b>	cw		105 in 80	40
<b>Lesser Scaup</b>	cw		1627 in 80	32
<b>Long-tailed Duck</b>	cw		190 in 76	23
<b>Bufflehead</b>	6		85 in 79	49
<b>Hooded Merganser</b>	64		80 in 108	34
<b>Common Merganser</b>	194		335 in 90	50
<b>Ruddy Duck</b>	2		20000 in 80	52
<b>Wild Turkey</b>	6		8 in 108	3

<b>Common Loon</b>	2		4 in 102	18
<b>Horned Grebe</b>	2		8 in 61	25
<b>Double-crested Cormorant</b>	7		61 in 102	28
<b>Great Blue Heron (Blue form)</b>	18		96 in 93	52
<b>Black Vulture</b>	191		144 in 109	23
<b>Turkey Vulture</b>	322		226 in 109	48
<b>Bald Eagle</b>	8		13 in 109	24
<b>Northern Harrier</b>	2		33 in 63	49
<b>Sharp-shinned Hawk</b>	16		45 in 102	42
<b>Cooper's Hawk</b>	23		26 in 108	42
<b>Northern Goshawk</b>	1		3 in 83	17
<b>Red-shouldered Hawk</b>	7		8 in 68	51
<b>Red-tailed Hawk</b>	93		117 in 102	53
<b>American Kestrel</b>	2		66 in 78	51
<b>Merlin</b>	2		3 in 103	16
<b>Peregrine Falcon</b>	2		3 in 108	22
<b>Killdeer</b>	9		265 in 59	51
<b>American Woodcock</b>	1		12 in 75	35
<b>Ring-billed Gull</b>	1036		4003 in 84	53
<b>Herring Gull</b>	27		10000 in 71	53
<b>Great Black-backed Gull</b>	29		220 in 93	53
<b>Rock Pigeon (started counting #75)</b>	862		1521 in 93	36/36
<b>Mourning Dove</b>	528		1743 in 93	53
<b>Eastern Screech-Owl</b>	26		95 in 77	53
<b>Great Horned Owl</b>	10		44 in 89	51
<b>Belted Kingfisher</b>	17		41 in 93	53

<b>Red-bellied Woodpecker</b>	123		163 in 106	53
<b>Yellow-bellied Sapsucker</b>	17		20 in 82	48
<b>Downy Woodpecker</b>	175		262 in 82	53
<b>Hairy Woodpecker</b>	38		50 in 108	53
<b>Northern (Yellow-shafted) Flicker</b>	44		134 in 85 & 92	53
<b>Pileated Woodpecker</b>	12		17 in 108	44
<b>Eastern Phoebe</b>	1		2 in 91	20
<b>Blue Jay</b>	145		1158 in 82	53
<b>American Crow</b>	768		4164 in 93	52
<b>Fish Crow</b>	8		220 in 70	53
<b>Carolina Chickadee</b>	490		1045 in 82	53
<b>Black-capped Chickadee</b>	15		530 in 81	53
<b>chickadee sp.</b>	25		53 in 91	5
<b>Tufted Titmouse</b>	345		605 in 83	53
<b>Red-breasted Nuthatch</b>	12		325 in 82	49
<b>White-breasted Nuthatch</b>	165		242 in 83	53
<b>Brown Creeper</b>	26		45 in 83	53
<b>Carolina Wren</b>	106		401 in 93	53
<b>Winter Wren</b>	20		27 in 93,96,99	51
<b>Golden-crowned Kinglet</b>	38		123 in 93	53
<b>Eastern Bluebird</b>	79		132 in 106	53
<b>Hermit Thrush</b>	5		29 in 108	50
<b>American Robin</b>	3597		9867 in 102	52
<b>Gray Catbird</b>	2		23 in 85	50
<b>Northern Mockingbird</b>	106		284 in 83	51
<b>Brown Thrasher</b>	1		10 in 71	37
<b>European Starling</b>	2482		19000 in 71	51

<b>American Pipit</b>	2		30 in 61	20
<b>Cedar Waxwing</b>	84		4649 in 86	52
<b>Yellow-rumped Warbler</b>	6		63 in 85	4
<b>Pine Warbler</b>	3	HC	2 in 109,98,96	13
<b>Eastern Towhee</b>	21		84 in 106	53
<b>American Tree Sparrow</b>	9		3700 in 66	52
<b>Chipping Sparrow</b>	7		10 in 104	37
<b>Field Sparrow</b>	37		320 in 67	53
<b>Savannah Sparrow</b>	15		68 in 59	43
<b>Fox Sparrow</b>	15		248 in 59	52
<b>Song Sparrow</b>	626		3600 in 67	53
<b>Swamp Sparrow</b>	21		520 in 66	53
<b>White-throated Sparrow</b>	1330		2926 in 58	53
<b>White-crowned Sparrow</b>	1		87 in 75	47
<b>Dark-eyed Junco</b>	1264		1667 in 83	53
<b>Northern Cardinal</b>	538		967 in 89	51
<b>Red-winged Blackbird</b>	456		6300 in 66	53
<b>Rusty Blackbird</b>	19		218 in 74	50
<b>Common Grackle</b>	22		9377 in 95	51
<b>Brown-headed Cowbird</b>	1		1500 in 71	53
<b>Purple Finch</b>	8		557 in 78	51
<b>House Finch</b>	304		2673 in 94	51
<b>Pine Siskin</b>	1		324 in 78	35
<b>American Goldfinch</b>	325		1400 in 62	53
<b>House Sparrow</b>	549		1600 in 72	53
TOTAL INDIVIDUALS COUNTED	32601			



TOTAL SPECIES REPORTED	90 + 3CW		Avg ~100	
<p>           cw = Reported count week;            US = Flagged as an unusual species;            HC = Flagged as an unusually high count.            LC = Flagged as an unusually low count.         </p>				